

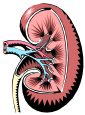
Nephrology Division Newsletter

November-December 2007



Announcements

- ❖ Our **Nephrology Division Holiday Soiree** is this Sunday! Please scroll to the Holiday Soiree section for details.
- ❖ The **Division office will be closed** on the following dates, which are University holidays:
 - December 24-25, Winter Holiday
 - December 31-January 1, New Year's Holiday
- ❖ **The Nephrology Division Office at Parnassus has officially moved to Clinical Sciences.** Our new address is 521 Parnassus Avenue, **C443**. All phone and fax numbers and Box 0532 remain the same.
- ❖ **Jessica Serbus** is our new Fellowship Coordinator, who started on Nov. 19. She is located at C443 and can be reached at 476-1812 or jserbus@medicine.ucsf.edu.
- ❖ **Alan Pao, MD**, who did his fellowship here at UCSF (2001-2006) and has been on faculty at SFGH since 2006, has taken a position at Stanford's Division of Nephrology. His last day was on Nov 30th.
- ❖ The **T32 application** has been reviewed and received a score of 119, and we look forward to getting our grant back.



Fellowship Program

- ❖ **Delphine Tuot, MD**, third year medicine resident at UCSF, has accepted a position in the Nephrology Fellowship Program for July 2008.



Nephrology Holiday Soiree 2007

- ❖ **We have 113 people who plan to attend the Holiday Soiree!** Here are the details:

Where: UCSF Faculty/Alumni House, 745 Parnassus Avenue

When: Sunday, December 9

Time: 5:00pm-8:00pm

- ❖ **Parking:** Public parking is available behind the Dental Clinic Building; enter at 5th Ave. and Kirkham St. The price is \$1.50 for weekends and you will need to pay using one of the Pay Stations at the parking lot. There is also the Millberry Union Garage at 500

Parnassus across from the Medical Center (\$2.25 an hour, up to a daily maximum of \$22.00) and limited street parking.

- ❖ **Extras:** There will also be a cupcake station and individual pizza making for kids (and adults, too!).

To contribute, please e-mail Lynn Prudencio at lprudencio@medicine.ucsf.edu. Contributions are *always* welcome. The newsletter is distributed on the first Friday of every other month.